



*discovering  
st mary's*

community



# why choose St Mary's

We are a unique school. We foster individuality. We nurture talents and nourish passions. We inspire dreams and promote possibilities.



121

TEACHING STAFF

88

ANCILLARY  
STAFF

18

EDUCATION  
ASSISTANTS



Anglican day and  
boarding school for girls

1464 students

KINDERGARTEN TO YEAR 12

1464 STUDENTS, KINDERGARTEN TO YEAR 12

1284 DAY STUDENTS

180 BOARDING STUDENTS

1051 STUDENTS IN YEARS 7 TO 12

413 STUDENTS IN KINDERGARTEN TO YEAR 6

89 WA COUNTRY TOWNS REPRESENTED

6300 OLD GIRLS NETWORK



## 2017 WACE RESULTS

4 GENERAL EXHIBITIONS

16 CERTIFICATES OF EXCELLENCE

46 CERTIFICATES OF DISTINCTION

49 CERTIFICATES OF MERIT

MEDIAN ATAR **91.45**

WITH STATE MEDIAN **81.40**

*academic*



209

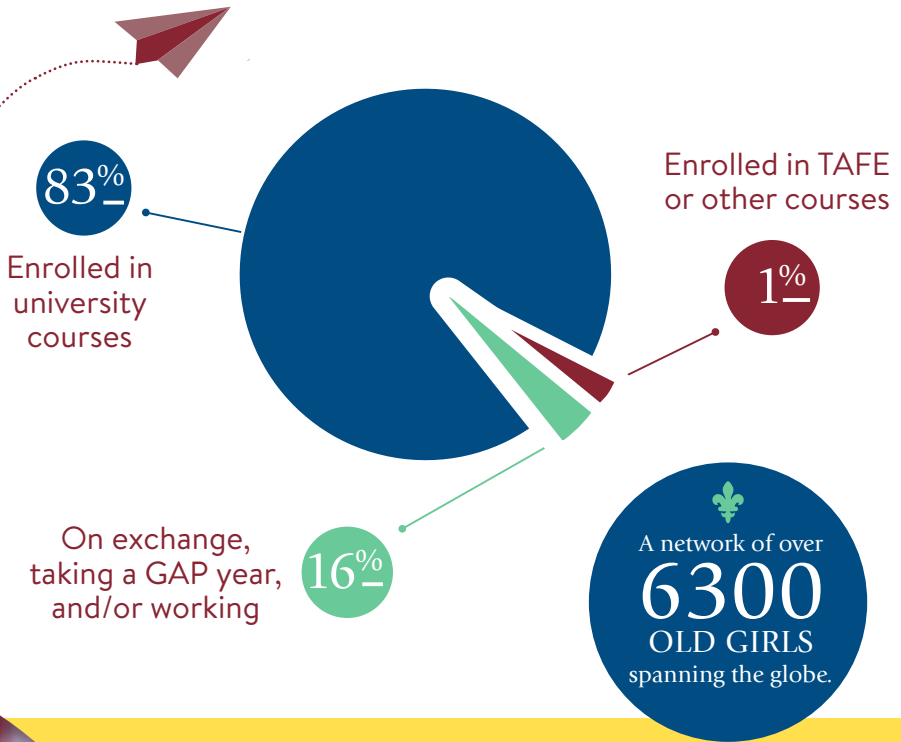
subjects offered  
in Years 7 to 12

### 2017 NAPLAN

100% of students at or above the minimum national standards in 14 of 20 sections; no less than 98% in the other 6 sections.



# post-school destinations



- 52 GENERAL EXHIBITIONS SINCE 2000 -

- 49 SUBJECT EXHIBITIONS SINCE 2000 -

- 2 RHODES SCHOLARS -

- 1 JOHN MONASH SCHOLAR -

# campus



16 hectare  
main campus

40 hectare  
rural campus



13 SCIENCE LABS

---

4 TECHNOLOGY LABS

---

1 PERFORMING ARTS CENTRE

---

1 MUSIC AND DANCE CENTRE

---

2 LIBRARIES

---

~ SENIOR SCHOOL LIBRARY OPEN WEEKDAYS 7.30AM - 8.15PM

---

7 ART STUDIOS

---

3 FOOD PREPARATION AND COOKING ROOMS

---

5 OVALS AND OPEN SPACES

---

2 GYMNASIUMS

---

1 OLYMPIC-SIZE HEATED SWIMMING POOL AND DIVING POOL

---

1 OUTDOOR EDUCATION CAMPUS AT METRICUP

---

1 VINEYARD

---



# DRAMA

186  
STUDENTS INVOLVED  
IN INTERHOUSE DRAMA

97  
STUDENTS INVOLVED  
IN MAJOR PRODUCTIONS

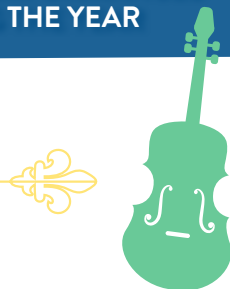


# MUSIC

36 PERFORMING ENSEMBLES,  
INCLUDING 6 COMBINED WITH  
HALE SCHOOL

430 PRIVATE MUSIC LESSONS  
PER WEEK WITH 35  
PERIPATETIC TEACHERS

16 PUBLIC PERFORMANCES  
DURING THE YEAR



## *beyond the classroom*

22 CLUBS INCLUDING SURFING, ROBOTICS,  
AND JUNIOR PHILOSOPHY

5217.75 COMMUNITY SERVICE  
HOURS FOR YEAR 10  
STUDENTS

21 000 SEEDLINGS PLANTED BY  
YEAR 10 STUDENTS AS  
PART OF THE CHITTERING  
LANDCARE TREE PLANTING  
INITIATIVE



28 ST MARY'S STUDENTS ON  
EXCHANGE TO 13 EXCHANGE  
SCHOOLS IN 6 COUNTRIES

23 STUDENTS WERE WELCOMED  
TO ST MARY'S FROM 11 EXCHANGE  
SCHOOLS IN 6 COUNTRIES

# sport



## – Term 1 –

SWIMMING  
DIVING  
TENNIS  
VOLLEYBALL  
CRICKET

## – Term 2 –

GYMNASTICS  
CROSS COUNTRY  
HOCKEY  
NETBALL  
AUSTRALIAN RULES  
FOOTBALL



## – Term 3 –

SOCCER  
BASKETBALL  
ATHLETICS

## – Term 4 –

SOFTBALL  
WATER POLO

CROWNED  
- IGSSA -  
CHAMPIONS  
2015 AND 2017



## Year Round

BADMINTON, FITNESS,  
SWIMMING, SURFING



# 523

IN 2017, NUMBER  
OF GIRLS IN  
INTER-SCHOOL  
TEAMS FROM  
YEARS 7 TO 12



240 Students involved in  
interhouse dance

92 Students involved in  
dance showcase

*fun fact*

THE SCHOOL HAS TWO  
RESIDENT GOATS



**St Mary's**  
ANGLICAN GIRLS' SCHOOL  
FOUNDED 1921

75 Elliott Road Karrinyup Western Australia  
PO Box 105 Karrinyup WA 6921

**T** +61 8 9341 9111

**F** +61 8 9341 9222

**E** [stmarys@stmarys.wa.edu.au](mailto:stmarys@stmarys.wa.edu.au)

[www.stmarys.wa.edu.au](http://www.stmarys.wa.edu.au)

CRICOS Number 00454C

St Mary's is a Child Safe School